

Slate Portable



Includes:

Production Switcher

- 8 live inputs in HD, SD, analog, DVI or combinations, plus up to 14 internal video & key clip and graphic inputs
- 3 keys, 6 optional, all with DVE for effects including picture-in-picture
- Control from touch-pad, optional touch-screen or panel.
- Optional device control of robotic cameras, audio mixers and servers.

Fluent Workflow Tools

- 1 channel, 2 optional, of HD or SD clips with audio for h.264, ProRes, and DV/DVCPRO. Holds up to 200 hours.
- 5 channels of HD, SD graphics with key, and built-in Harris Inscribe CG
- Multi-view on built-in monitor, and can attach a second monitor.
- Watch-folders to bring in files from Final Cut, Photoshop, etc.
- Macros combine clips and graphics to make powerful productions easy.

Rugged Package

- Strong Aluminum Construction
- Built-in 17" 1280x1024 LCD Monitor
- Detachable Keyboard and Touch Pad
- I/O panel on back with BNCs/XLRs
- Built-in sync generator
- 45 pounds, 20 Kilograms

Case

- Padded carrying case with wheels included, or optional hard case

A Control Room in a Briefcase

Bring an entire live video production system to any location.
Set-up in minutes and create compelling live video.



"WOW! All the power, features and functionality of a Broadcast Pix Slate in a portable 45 pound package. I was not fond of what other fly packs had to offer. Rolling racks really weren't an option for us and the other portable all-in-ones available on the market were a bit awkward with their functionality. My first time out with the Slate Portable was the easiest setup I've ever had in the field, and it's only gotten easier the more I use it. It's a great machine."

Justin Cowgill
Director of Facilities and Technology
CreaTV San Jose, California



Slate Portable

I/O Configurations

Every Slate Portable has 8 live inputs for cameras and other external devices, plus an internal clip store with key and 5 graphics channels, each with key. The clip store can expand to 2 channels, and audio I/O is standard. The video inputs can be synchronous or asynchronous. Each HD input and output can be individually set to 1080i, 720p or SD and have 16:9/4:3 aspect correction. Six configurations are available:

Part #	Live Inputs			Outputs		
	HD/SD SDI	SD SDI	Analog	HD/SD SDI	SD SDI	Analog
600hh	8			2	2	1
600hd	4	4		1	3	1
600ha	4		4	1	2	2
600dd		8			4	1
600da		4	4		3	2
600aa			8		2	3

Options

All Slate 100 options are available on the Slate Portable except quad monitoring support and premium workstation, so see the Broadcast Pix web site for a complete list of options. Popular options on the Slate Portable include:

- Part #**
- 350 • Touch-screen - monitor upgrade
 - 351 • Hard case - shown at right
 - 352 • Wide screen monitor - 1920x1080
 - 08 • 100 Panel – affordable control panel
 - 10 • 1 M/E panel – from Slate 1000
 - 105 • 2 M/E SoftPanel - adds a second M/E
 - 50 • DVI I/O - convert up to 2 HD inputs and outputs to DVI or VGA
 - 301 • Second Clip Channel – with key and audio, doubles storage
 - 318 • Double Clip Storage – to up to 200 hours (1 TB)
 - 80X • Camera Control – Sony, Panasonic or Hitachi robotic cameras
 - 601 • Training



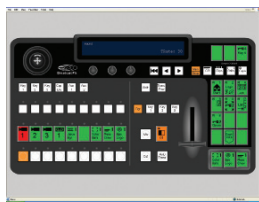
See www.broadcastpix.com for many more options

Dimensions 10x13.7x17.3 inches 254 x 346 x 438 mm
 Weight 45 lbs 20 kg Power 300 Watts

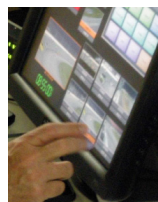
Many Ways to Control



Touch pad



SoftPanel



Touch-screen option



iPixPanel option



1 M/E Panel option



Model 600ha shown

